

# Assembly Instructions for 360 Table & Stand



**VD-K.TOOLS**

VD-K.TOOLS a **The PipeKnife<sup>®</sup>** Brand  
Company

The PipeKnife Company  
13301 W. 43rd Drive, Unit 11  
Golden, CO 80403  
Phone: (303) 232-8788  
Email: [sales@pipeknife.com](mailto:sales@pipeknife.com)  
Web: [www.pipeknife.com](http://www.pipeknife.com)

# Work Table & Swivel Top



## Unpacked



**Keter Work Table**

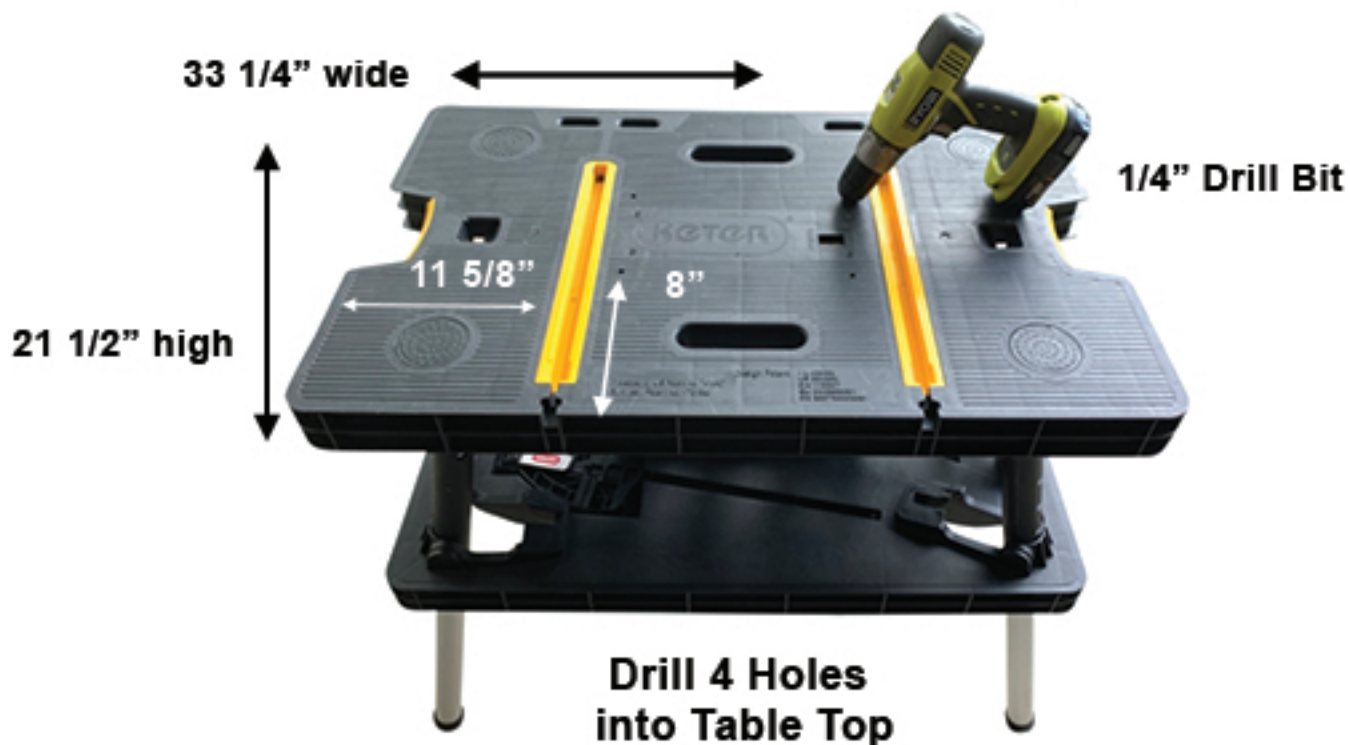
**33 1/4" X 21 1/2"**

**Swivel Top**

**7" x 11" Base**

**#4 2" Screws**

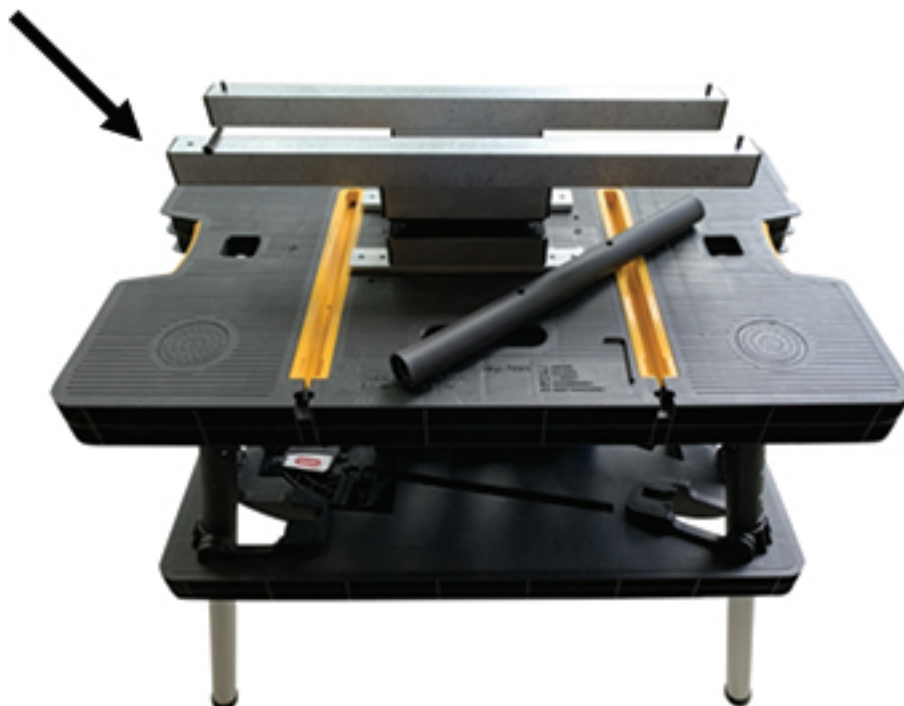
# Attach Swivel Top



8" x 11 5/8" in from sides

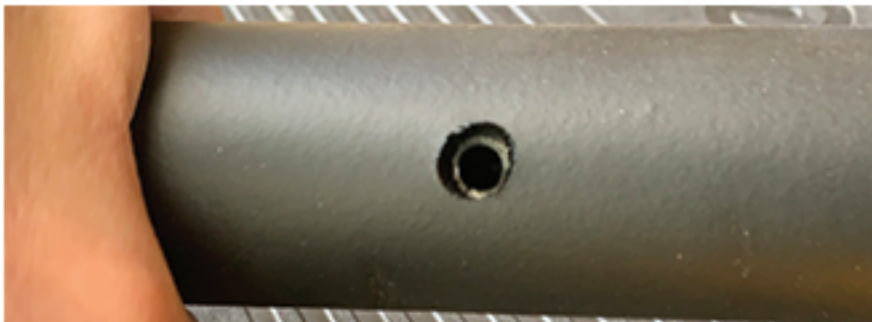
\* Tip - put Swivel Top onto top of table centered, scratch marks into the screw holes for accurate drilling

## Insert Screws into Top Bar Holes from Underside



# Align Holes in Padded Rubber Bar

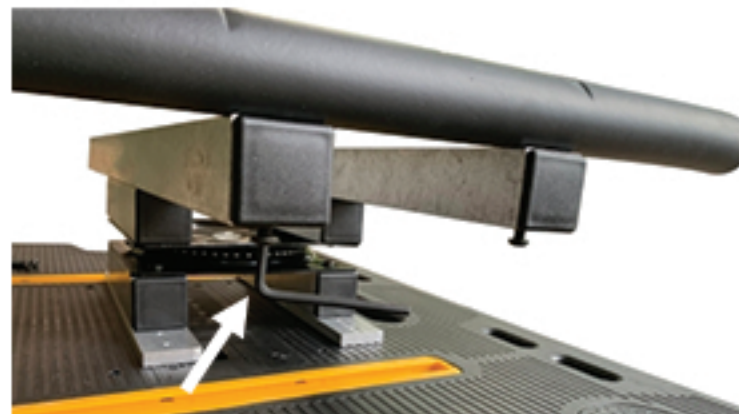
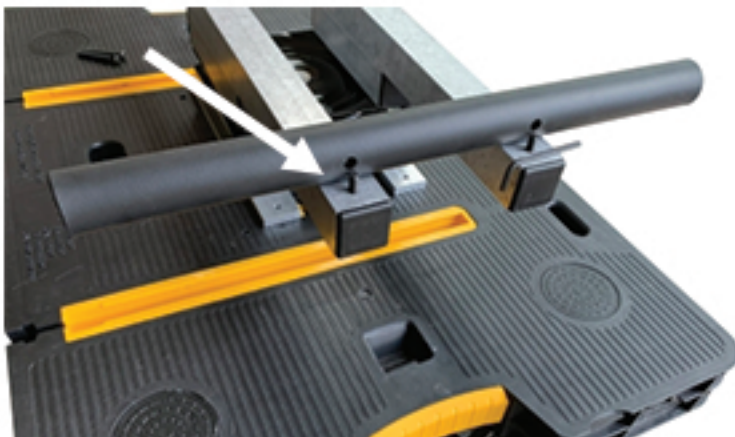
Sometimes during shipping, the holes get unaligned, simply twist the rubber portion to realign both holes



**\* Tip**  
- look through the sides of the bar to see hidden holes in metal bar

# Attach Rubber Bars to Swivel Base

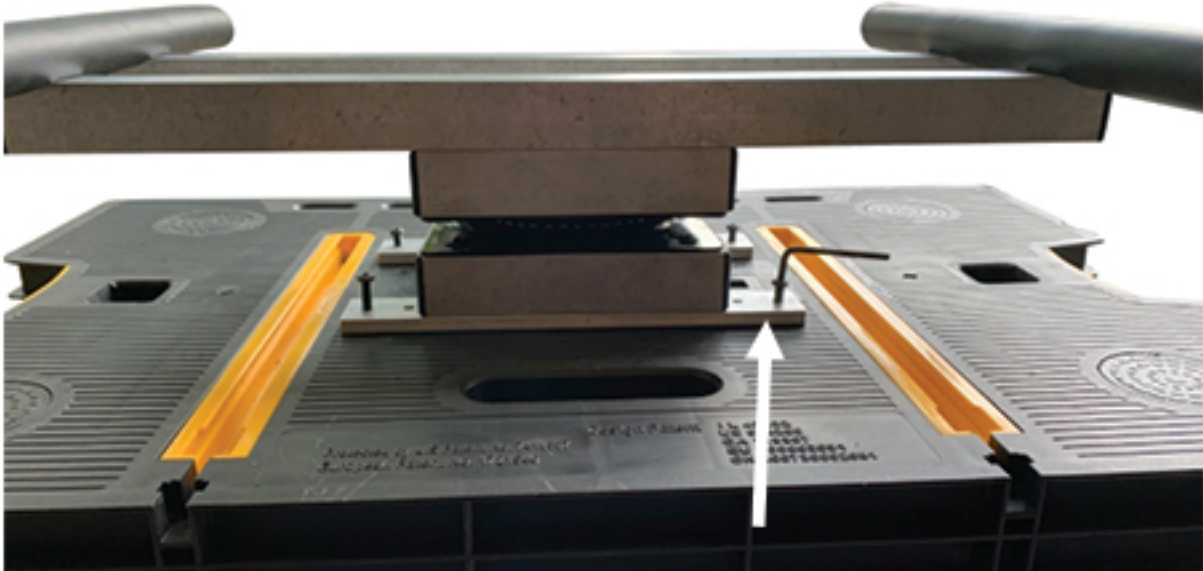
Align holes in rubber bar to screws



Screw into bar with 5/32 hex wrench



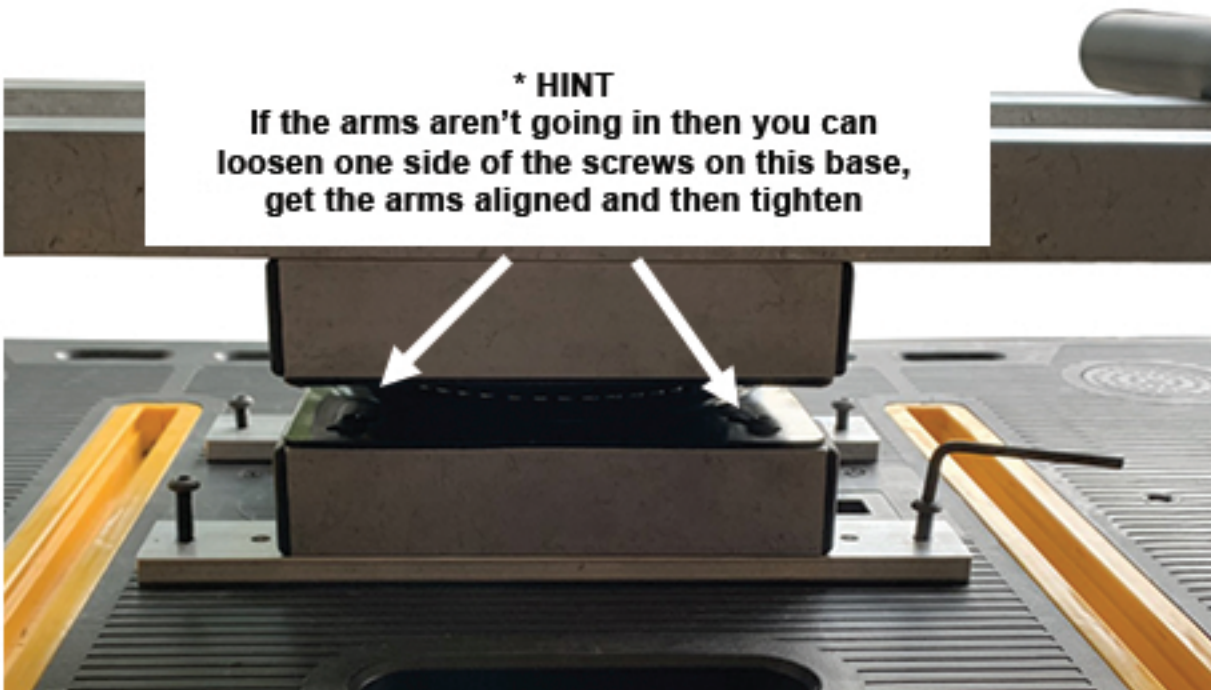
## Tighten Screws to Table (with 5/32" hex wrench)



## Arm Alignment

### \* HINT

If the arms aren't going in then you can  
loosen one side of the screws on this base,  
get the arms aligned and then tighten



## Optional Clamp System

To secure top and bottom of Swivel  
to prevent spinning



## Swivel Table Setups

